

Fabricating Shop Liquidation

AUCTION

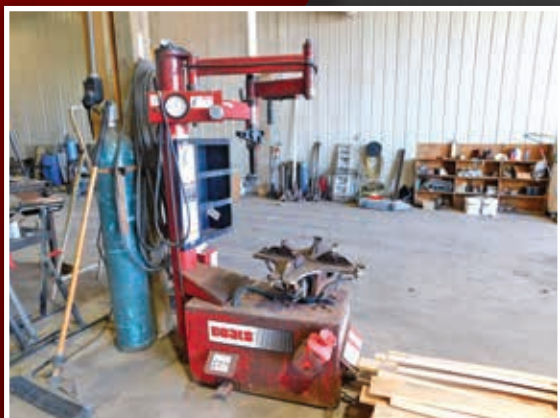
TIMED ONLINE



Opens: Fri., Oct. 30th / Closes: Friday, November 6, 2020 at 10AM

Cedar, Iowa
 Located at
 2891 330th Street,
 Cedar, IA 52543

Auctioneer's Note: Merle Fawcett has decided to retire and sell his items on this Steffes Group Timed Online Auction event. Register and bid your price at SteffesGroup.com. Loadout will be Monday, November 9th, 9AM-4PM. Buyer will be responsible for removal of items purchased. Please bring your own manpower, tools & equipment. Steffes loader will be onsite the day of loadout to assist in loading.



UTV & MOTORCYCLE

2020 Can-Am Maverick XRS Turbo RR, 89 miles/ 8.8 hrs., 4x4, 1000cc, Fox shocks, 24" travel, 32" tires, S/N 7052080337739
2005 Dakota Thunder Ultima, 5,954 miles, 113 cu.in, soft tail frame, single down hole frame, S&S carburetor, Vance & Hines exhaust, forward controls, 3" belt drive, Billet wheels front & rear, 250 rear tire, VIN 5339
2007 Harley Davidson, engine, 96 cu.in., fuel injected (turns over)

UTILITY TRACTOR & ROTOTILLER

2018 John Deere 1025R, 157 hrs., MFWD, diesel, hydrostatic, ROPS, 3 pt., 540 PTO, 60" deck, mid mount hyd. couplers, 305/60-12 rear tires, S/N LVRG061033638
John Deere 647, rototiller, 3 pt., 540 PTO, S/N 1LV0647BKH0111519 (Owner states used once)

TRACK SKIDLOADER & ATTACHMENTS

2003 ASV RC50, 2,215 hrs., track skidloader, diesel, aux. hyd., 60" bucket, rear weights, S/N RSC 00994
Pallet forks, skid steer mount
Gooseneck trailer mover, skid steer mount
Grapple bucket, skid steer mount
Loader bucket, skid steer mount
Snow blade, skid steer mount
V spade bucket, skid steer mount

WHEEL LOADER

Daewoo Mega 250 III, wheel loader, 3-1/2 yd. bucket, S/N CA200159F

LIFT

JLG 2646E2, scissor lift, 20' height (Owner states new batteries in the last 2 months)

DUMP TRUCK

Ford LT800, shows 14,060 miles, dump truck, 477 gas, Spicer 5x4 speed, 2 sticks, 13'6" box, 60 Ton hoist, Eaton D3HA rear end, 7.17 ratio, walking beam suspension, 75 gal. fuel tank, 10x20 tires, Dayton wheels, VIN T88JVV46247

SHOP EQUIPMENT

Storage container, 20'x102' wide
2010 Launch TW 682, dual wheel tire machine, S/N 510810003202
Coats 765 AX, rim clamp tire machine, pneumatic, new cylinder, P/N 8047095, S/N 991103556
Coats 1055, wheel balancer, direct drive, P/N 8121055 S/N 9911302768
C-Aire A075V080-1230FP, air compressor 7.5 hp. motor, 1 phase, S/N CA201701803
2001 Grizzly G1004 A15-A Type, milling machine, S/N 0-8331
Central Machinery, metal bandsaw 1 phase, on casters
Lincoln MP350, mig welder, w/cart & tank
Systematics MP250, welder cart & tank
Hypertherm PowerMax 45, plasma cutter w/ cart

SHOP EQUIPMENT CONT.

Pac 10, metal lathe; **Bosch GTA 500** table saw, S/N 411260242; **Bosch** chop saw; **Bosch** portable air compressor; Briggs & Stratton 5500 generator; **Craftsman** toolbox, 36", 3-section, on casters; **Performax** toolbox, 48"; Crane hoist, 3 Ton, adjust.; **Snap On T** handle allen set; **Snap On T** handle torx set; **Snap On** allen set, 3/8", extended; **Snap On** torx set, 3/8", extended; **Snap On** picks; **Snap On** Screw drivers; **Craftsman** end wrenches; **S&K & Craftsman** wrenches; **KTool** hammers; Drills; Grinders; Cut off wheels; Flap discs; Creeper; Fan; Hand tools sockets; Impact sockets; Hoist drain; Husky shop vac; Jack Stands; Johnson laser & tripod; Lawson bolt bin; Lawson drawer system; Lawson shelving; Lawson tap & dies; Metal welding tables on casters; Metal & wood stands; Metal frame welding jigs; Metal shelving; Paslode air nailers, stud & finish; Sawzall; Performance Tool floor jack, 3 Ton; Porta power; Power washer; Rollaway oil drain, 17 gal., w/pump; Tire bars; Battery charger; **Echo** chainsaw; Overhead fuel barrel; Wood Barn Beams; 13" Nut thread setting hand riveter kit; 4" trailer straps; Aluminum ext. ladder; Cosco 20-8F1 fiberglass step ladder; Fiberglass ext. ladder, 24'; Aluminum ramps; Pellet stove PP130, S/N 01732; Harnady 42279 automatic reloader, 380, 40, 9mm, 223, 7.62; Reloading tumbler, primer, brass rounds, bags of 40 lead, 4000 rounds

METAL STOCK

Metal stock to include 3x3 angle, 6"/8" 2 sticks, 4" C channel; 4'x8' aluminum, 3/16"; 4'x8' Deck plate, 3/16"; (8) Aluminum C channel 24', 2"; Sections of flat plate steel; Various metal stock

TRAILER EQUIPMENT

Western hauler bed dually; Peterbilt 63" standup Unibilt sleeper; Stationary 5th wheel; BD turbo, for Cummins 5.9; 8" SS exhaust stack; Assorted new trailer axles; Gooseneck plate hitch for pickup; Trailer equalizer bars (new); (10) 22.5x8.25 aluminum wheels; Assorted truck tires & wheels; ST175/80R13 set of (4) tires



MORE PHOTOS
 AVAILABLE
 ONLINE!!



Built on Trust.

Merle Fawcett |

For information contact Jerry Roth
 of Steffes Group at 319.385.2000
 or 319.750.3269



SteffesGroup.com

Steffes Group, Inc., 2245 East Bluegrass Road, Mt. Pleasant, IA 52641 | 319.385.2000

Licensed to sell Real Estate in IA, MN, ND, SD, MO, & IL | Announcements made the day of sale take precedence over advertising.

